

Distribution of Milk Components

In Figure 1 the distribution of milk components is presented from milk samples collected in 2007 from Dutch Black & White Holstein Friesian cows.

The displayed milk components are:

- Fat (% x 100)
- Protein (% x 100)
- Lactose (% x 100)
- Somatic cell score (cells x 1000 / ml)
- Urea (mg / 100 g)

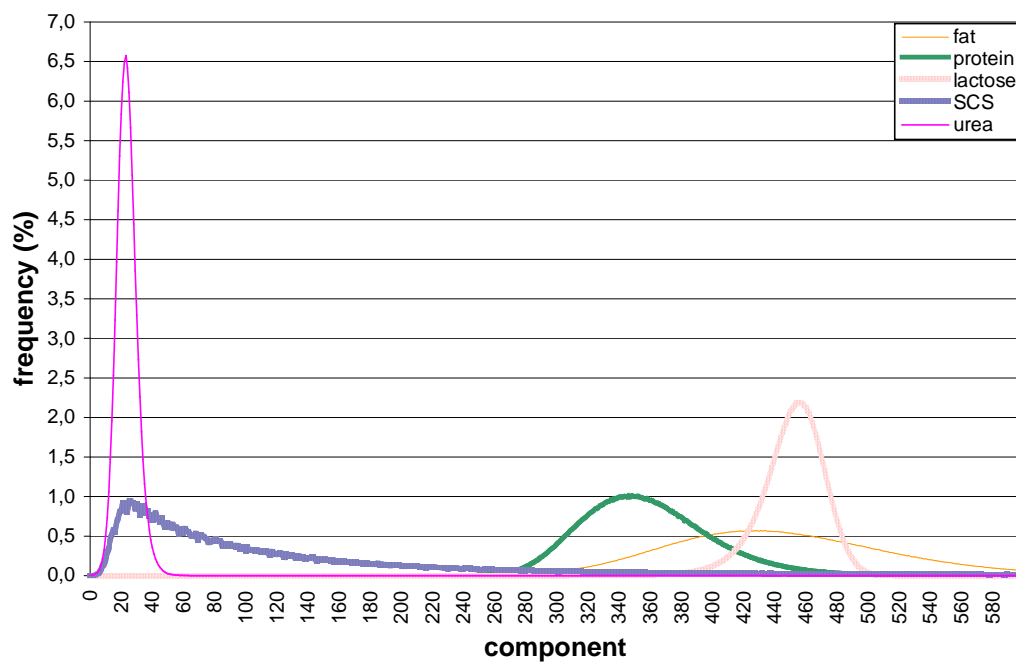


Figure 1. Distribution of milk components: fat, protein and lactose, somatic cell score (SCS) and urea in Dutch Holstein Friesian Population (2007)